

WallControl 10 for Milestone XProtect®

Integrated video wall management software for security markets



THE MODERN SECURITY SUITE

Security Suites require a great deal of information to be viewed, processed and actioned. Security operators not only require instant access to the correct camera feed but also need to present and share it to a wider audience. These demands mean video walls are becoming a must-have feature of modern Security rooms, and are being used to present a wider number of sources to operational teams. Using video walls allows IP and CCTV feeds to be put on a larger surface but the inclusion of locally captured inputs, browser windows and local media ensures that critical information is available to all.

Having a single all in one solution is critical to the smooth operation of the security suite. Operators must be able to maintain their focus at all times and not have to worry about dealing with more software applications than necessary.

Datapath's WallControl 10 plug-in for Milestone allows users of Milestone's XProtect security suite to directly add content to the video wall from within the XProtect interface.

INTEGRATED VIDEO WALL CONTROL

Using WallControl 10 for Milestone XProtect, workstation operators are able to seamlessly drive video walls directly without needing to constantly switch between different applications.

The WallControl 10 plug-in is available in both the "Live" and "Playback" tabs within XProtect. Using the simple interface operators can send live or recorded camera feeds to the video wall. At the click of a button the plug-in can be used to send a single camera to the wall or all of the cameras present in the View.

For those times when responding to an ongoing incident and sending content to the video wall, the operator is able to "Track My View". Tracking to the video wall will automatically display what is in the operators view without further interaction. Tracking allows the wall to be populated in real time allowing operators to focus on their ongoing tasks.

A variety of content types can be delivered to the video wall from XProtect including; live IP video, carousels, browser windows and image files such as maps or schematics.

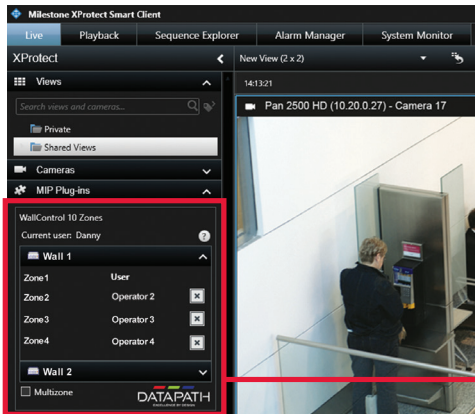
Engineering the **world's best** visual solutions

DATAPATH
EXCELLENCE BY DESIGN

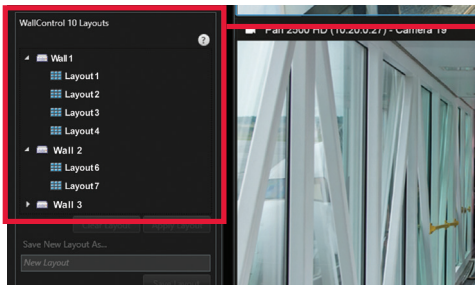
Integrated video wall management

ZONES

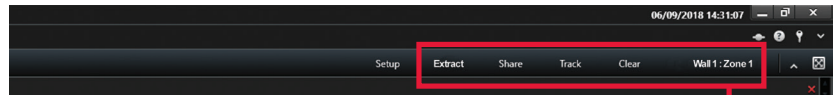
The WallControl 10 plug-in utilises an innovative zonal system. For each video wall on the system, a number of zones can be defined. Each of these zones can be pre-programmed in advance and be made up of either multiple screens or part of a screen. Operators simply select the zone they wish to work with and content can be sent to the zone at the click of a button. In addition utilising the Milestone User Rights Management feature, senior users can take control of zones as required, locking out junior roles from accessing any particular zone until permission is granted.



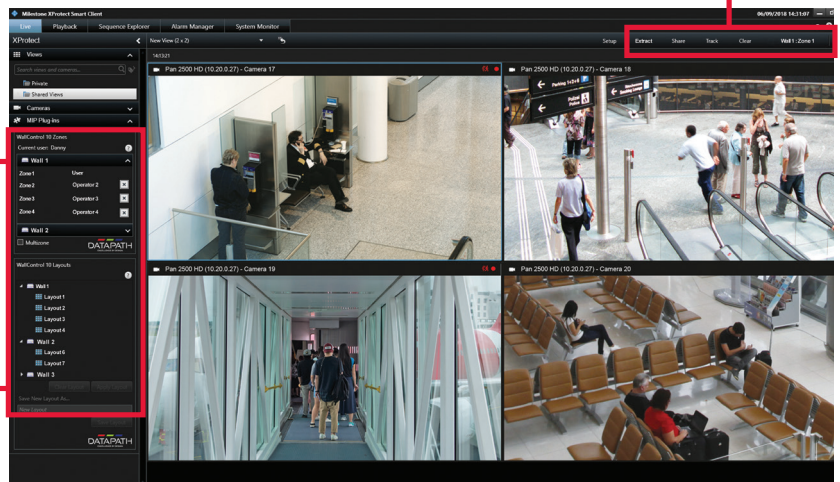
A number of zones can be setup for each video wall and allotted to a user



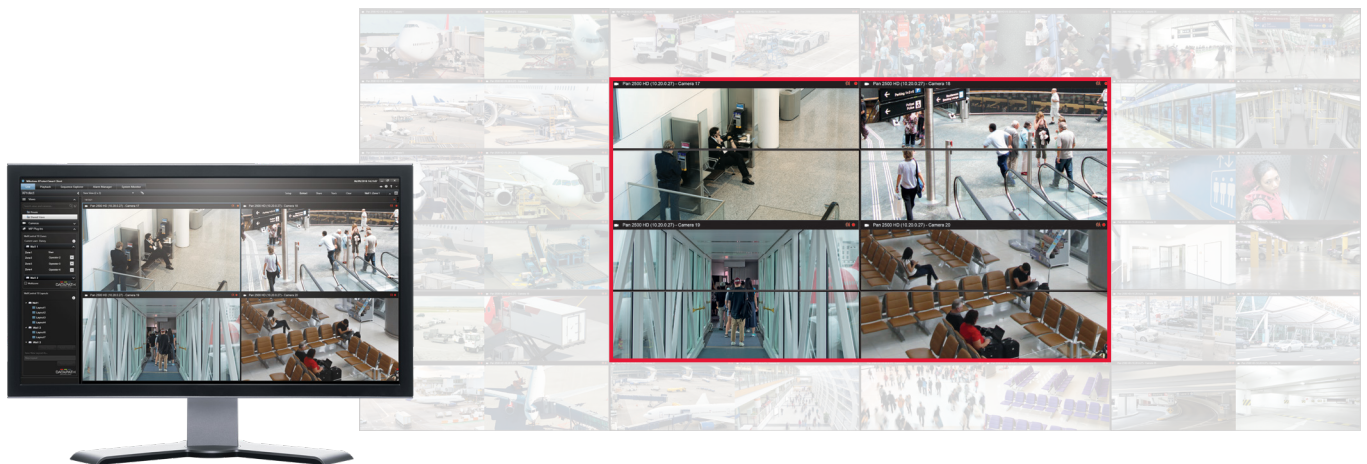
Create a number of layouts for each video wall



Feature buttons provide complete control of the video wall



Milestone XProtect interface with Datapath WallControl 10 integration



Content appears in the pre-programmed zones on the video wall

Integrated video wall management

FEATURES

Full WallControl 10 Pro features are available via the plug-in. From within XProtect, users are able to recall saved layout files that may include local inputs such as TV feeds. Multiple dedicated video walls can also be driven from a single WallControl 10 server each of which can be accessed from with the XProtect interface.

To aid in setting the system up, WallControl 10 will auto-populate all necessary cameras from within the XProtect management server.

Share View

This feature takes the camera feeds from within the operator "View" and displays them on the video wall within the selected zone.

Track My View

Selecting Track my View will automatically send the cameras from each operator view to the video wall without the need for the operator to share each time. Tracking my view enables the operator to focus on their work without having to remember to additionally add cameras to a video wall.

Extract Cameras

If the user view contains camera carousels, whereby a number of cameras can be cycled in a loop, the Extract feature allows the cameras currently "on top" to be sent to the video wall. This allows an operator to see a camera of particular interest on the wall whilst the carousel continues on their local screen.

Deploy Layout files

As is possible when using WallControl 10, XProtect users are able to deploy saved layout files onto the video wall. This allows for captured video, such as a TV signal or PC to be directly displayed onto the wall alongside the video cameras.

User Rights Management

The WallControl 10 plug-in works alongside Milestone's User Rights Management component. Each XProtect user can be assigned a role. Each role is given a priority. Lowest priority users can send cameras to a zone only if a higher priority user is not using it. If a higher priority user wishes to add content then their content will be displayed until either they clear the zone or a higher priority users takes control.

Camera Discovery

WallControl 10 for Milestone XProtect will recognise all cameras that are available within Milestone's recording server and automatically populate WallControl 10 with the correct settings making the set up process simple.

Integrated video wall management

INSTALLATION

WallControl 10 for Milestone XProtect is installed on the Milestone management server and event server as well as the client that needs to be able to use the video wall.

In addition a Milestone Open Network Bridge will be required.

COMPATIBILITY

The Plug-in is supported in the Corporate, Express+, Professional and Expert versions of Milestone XProtect. The following table provides details on which approved driver and version of WallControl 10 is needed with each release of Milestone.

Driver Version	Milestone Version	WC10 Version	WC10 Plugin Version
6.4.3	2022 R3 - Corp	1.12.8	1.2.7
6.4.3	2022 R3 - Corp	1.12.7	1.2.4
6.2.11	2022 R3 - Corp	1.12.7	1.2.4
6.2.11	2022 R2 - Corp	1.12.7	1.2.4
6.4.6	2023 R1 - Corp	1.13.0	1.2.7
6.4.6	2023 R2 - Corp	1.13.1	1.3.1
6.4.11	2023 R3 - Corp	1.13.2	1.3.2

Please note that Essentials+ does not support plug-ins.

WallControl 10 for Milestone XProtect requirements: Datapath VSN OR iolite system with WallControl 10 Pro installed.

AVAILABLE LANGUAGES

WallControl 10 for Milestone XProtect software is available in Chinese, English, French, German, Italian, Japanese, Polish, Portuguese, Russian, Spanish and Turkish.

MODELS AVAILABLE

Order Code: WALLCON10MIL

WallControl 10 for Milestone XProtect.



Datapath UK and Corporate Headquarters
Bemrose House, Bemrose Park,
Wayzgoose Drive, Derby,
DE21 6XQ, United Kingdom
☎ +44 (0) 1332 294 441
✉ sales-uk@datapath.co.uk

www.datapath.co.uk

Datapath North America
2490 General Armistead Avenue,
Suite 102, Norristown,
PA 19403,
USA
☎ +1 484 679 1553
✉ sales-us@datapath.co.uk

Datapath Japan
Axon Hamamatsucho,
1-1-23 Shibadaimon,
Minato-ku,
Tokyo-to,
105-0012, Japan
✉ sales-jp@datapath.co.uk

